

SUITE MIX BACH



J.S. BACH

Allegro (♩ = 92)

1 ANGLAISE

The musical score for '1 ANGLAISE' is written in G major (one sharp) and 3/4 time. It consists of six staves of music. The first staff begins with a treble clef, a key signature of one sharp (F#), and a common time signature (C). The tempo is marked 'Allegro' with a quarter note equal to 92 beats per minute. The score includes measure numbers 1, 5, 10, 14, 19, 24, and 29. The music features a mix of eighth and sixteenth notes, with some measures containing slurs and ties. The piece concludes with a double bar line and repeat dots.



Allegro ma non troppo (♩ = 70)

2 GAVOTTE

33

39

45

50

55

3 SARABANDE

Andante (♩ = 69)

61

69

77



83 **Moderato grazioso** (♩ = 104)

4 MENUETT

90 **Fine**

99

104 **D.C. al Fine**

107 **Allegro** (♩ = 80)

5 GAVOTTE

113

120

125

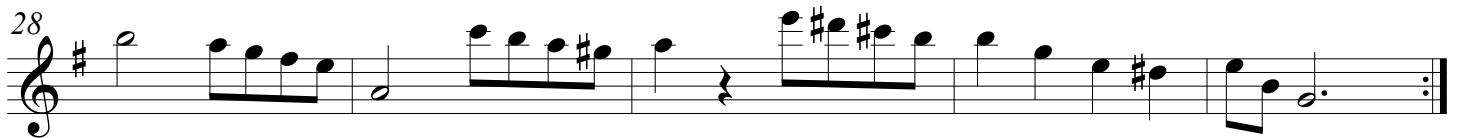
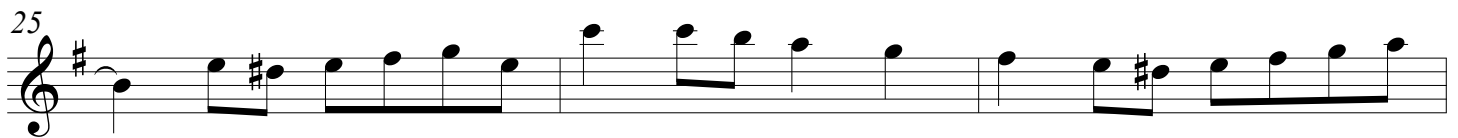
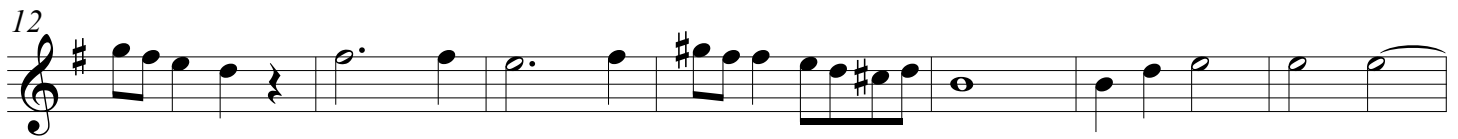
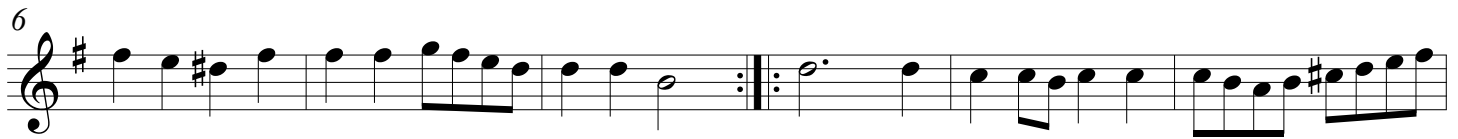
SUITE MIX BACH



Allegro (♩=92)

J.S. BACH

1 ANGLAISE





33 **Allegro ma non troppo** (♩ = 70)

2 GAVOTTE

40

47

55 **Andante** (♩ = 69)

3 SARABANDE

60

67

73

77



83 **Moderato grazioso** (♩ = 104)

4 MENUETT

91 **Fine**

99 **D.C. al Fine**

107 **Allegro** (♩ = 80)

5 GAVOTTE

113

122

129

SUITE MIX BACH



J.S. BACH

1 ANGLAISE *Allegro* (♩ = 92)

6

11

17

22

27

33 **Allegro ma non troppo** (♩ = 70)

2 GAVOTTE

Musical score for Gavotte No. 2, measures 33-50. The piece is in G major and 3/4 time. It begins with a repeat sign at measure 33. The melody is characterized by eighth-note patterns and rests. Measure 39 contains a repeat sign. The piece concludes with a final cadence in measure 50.

Andante (♩ = 69)

3 SARABANDE

Musical score for Sarabande No. 3, measures 55-76. The piece is in G major and 3/4 time. It begins with a repeat sign at measure 55. The melody features a mix of eighth and sixteenth notes. Measure 62 contains a repeat sign. The piece concludes with a final cadence in measure 76.



83 **Moderato grazioso** (♩ = 104)

4 MENUETT

99 **D.C. al Fine**

107 **Allegro** (♩ = 80)

5 GAVOTTE

SUITE MIX BACH



J.S. BACH

Allegro (♩ = 92)

1 ANGLAISE

1 ANGLAISE

7

13

18

23

29



2. GAVOTTE **Allegro ma non troppo** ($\text{♩} = 70$)

33

40

46

51

3. SARABANDE **Andante** ($\text{♩} = 69$)

55

61

67

75



4. MENUETT *Moderato grazioso* (♩ = 104)

83

90

96 *Fine*

102 *D.C. al Fine*

5. GAVOTTE *Allegro* (♩ = 80)

107

116

124

129

SUITE MIX BACH



BASS

J.S. BACH

Allegro (♩=92)

1 ANGLAISE

6 *f*

12

18

23

29

33 **Allegro ma non troppo** (♩=70)

2. GAVOTTE

39

45

50



55

Andante (♩ = 69)

3. SARABANDE

First staff of music for Sarabande, starting at measure 55. Bass clef, key signature of one sharp (F#), and 3/4 time signature. The music begins with a repeat sign and a double bar line.

61

Second staff of music for Sarabande, starting at measure 61. The music continues with a repeat sign at the end.

67

Third staff of music for Sarabande, starting at measure 67. The music continues with a repeat sign at the end.

75

Fourth staff of music for Sarabande, starting at measure 75. The music continues with a repeat sign at the end.

Moderato grazioso (♩ = 104)

83

4. MENUETT

First staff of music for Menuett, starting at measure 83. Bass clef, key signature of one sharp (F#), and 3/4 time signature. The music begins with a repeat sign and a double bar line.

90

Second staff of music for Menuett, starting at measure 90. The music continues with a repeat sign at the end.

96

Fine

Third staff of music for Menuett, starting at measure 96. The music concludes with a double bar line and the word 'Fine' above it.

102

D.C. al Fine

Fourth staff of music for Menuett, starting at measure 102. The music concludes with a double bar line and the instruction 'D.C. al Fine' above it.

107 Allegro (♩ = 80)

5. GAVOTTE

First staff of music for Gavotte, starting at measure 107. Bass clef, key signature of one sharp (F#), and common time signature. The music begins with a repeat sign and a double bar line.

116

Second staff of music for Gavotte, starting at measure 116. The music continues with a repeat sign at the end and a fermata over a measure.

124

Third staff of music for Gavotte, starting at measure 124. The music continues with a repeat sign at the end.

129

Fourth staff of music for Gavotte, starting at measure 129. The music concludes with a double bar line.