

b_REJOUISSANCE



BANDURRIA 2

Allegro (M.M. ♩ = c. 120)

G. TELEMANN

7

13

20

29

38

45

51

59

70

c. RONDEAU

(TAFELMUSIC 1)



BANDURRIA 2

Allegro (♩ = 150)

TELEMANN

7 **Fine**

14 **4**

22 *tr* *tr*

28 *tr*

35

41

47 *tr*

53 *tr*

60 *tr* **4** **10** **D.C. al Fine**

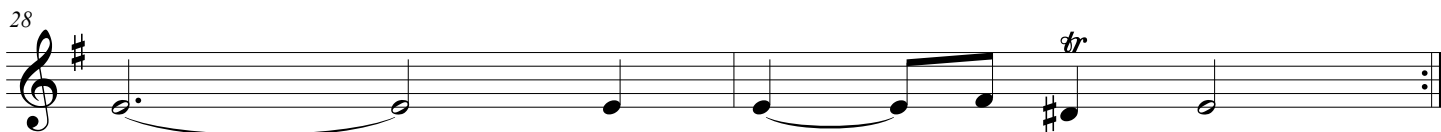
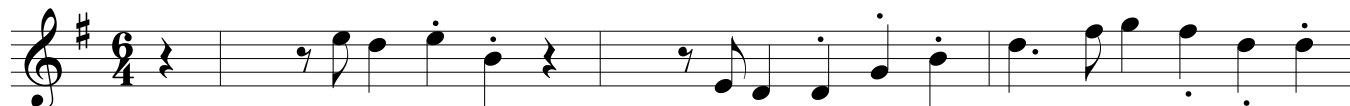
d. LOURE

(TAFELMUSIC 1)



BANDURRIA 2

TELEMANN



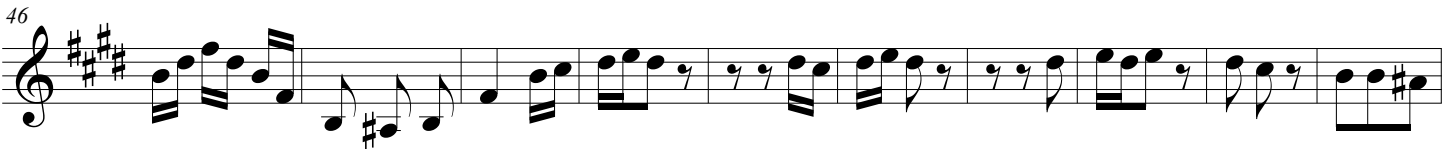
e_PASSEPIED



BANDURRIA 2

TELEMANN

Moderato (♩ = 160)



f_AIR



BANDURRIA 2

TELEMANN

Moderato (♩ = 90)

6

12

17 **Fine**

22

27 **4** **2**

36

42

46 **2**

52 *tr*

57

62

67 **D.C. al Fine** *tr*

g_ GIGUE



BANDURRIA 2

Allegro (♩ = 120)

TELEMANN

5

9

13

18

22

27

31

37

42