

b_ REJOUISSANCE



FLUTE 1

Allegro (M.M. ♩ = c. 120)

G. TELEMANN

7

13

19

26

34 *tr*

41 *tr* 2

50

58 *tr*

64 *tr*

71 2

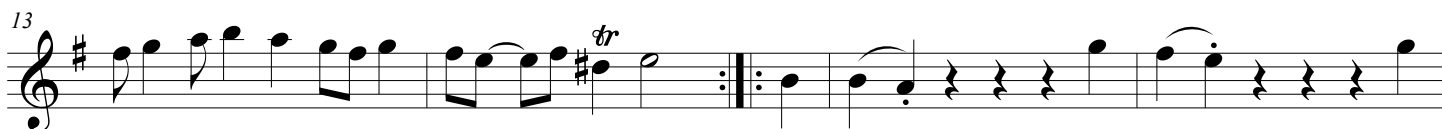
d. LOURE

(TAFELMUSIC 1)



FLAUTA 1

TELEMANN



e_PASSEPIED



FLAUTA 1

TELEMANN

Moderato (♩ = 160)

10

20

29 *Fine* *tr*

41

52 **2**

62 **D.C. al Fine**

f_AIR



FLAUTA 1

Moderato (♩ = 90)

TELEMANN

5

9

14

19

23

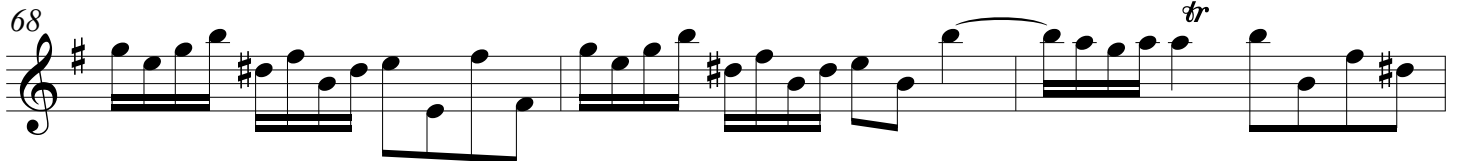
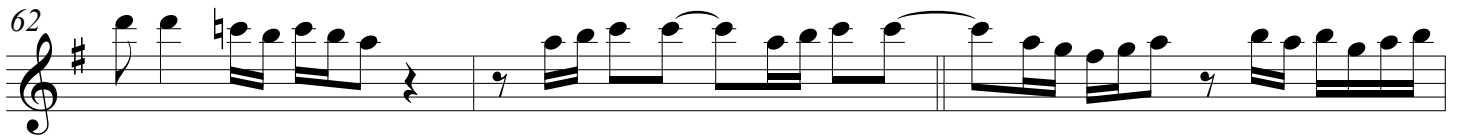
27

30

34

38

Fine

2
42 f AIR-flauta 1

g_ GIGUE



FLAUTA 1

TELEMANN

Allegro (♩ = 120)

f

tr

5 *tr*

10

15

19 *tr* *tr* *tr*

24 *f* *tr* *tr*

29

34

39 *tr* *tr*

44 *tr* *tr* *tr*