

a. Ouverture



TELEMANN

arr: Manuel Pérez-Gil

Lentement $\text{♩} = 70$

7

13

18

24

1. 2. Presto ($\text{♩} = 100$)

31

38

45

15

66

73

80

87

9 6

107

114

122

128

135

143

150

157

164

171

177

183

a. Ouverture



167J

FLAUTA 2

TELEMANN

arr: Manuel Pérez-Gil

98

5

109 *tr*

116

123

129

135 *tr*

143 *tr*

150

157

164 *p* *f*

171 *tr* $\text{♩} = 70$ *tr*

177 3 3 3

183 *tr*

Detailed description of the musical score: This page contains the musical notation for the second flute part of an overture, spanning measures 98 to 183. The music is in the key of A major (indicated by three sharps: F#, C#, G#) and is written on a single treble clef staff. The piece begins at measure 98 with a series of eighth notes. A fermata is placed over measure 102, with the number '5' written above it, indicating a five-measure rest. The melody continues with various rhythmic patterns, including sixteenth and thirty-second notes, and features several trills marked with 'tr'. Dynamic markings include 'p' (piano) at measure 164 and 'f' (forte) at measure 171. A tempo marking of '♩ = 70' is present at measure 171, indicating a quarter note equals 70 beats per minute. The score concludes at measure 183 with a final trill and a whole note.

a. Ouverture



The image shows a musical score for a Bandurria 1ª instrument. The score is titled 'a. Ouverture' and is an arrangement of a piece by Telemann, arranged by Manuel Pérez-Gil. The score is written in treble clef with a key signature of three sharps (F#, C#, G#) and a common time signature (C). It consists of 11 staves of music. The first staff starts with a tempo marking of quarter note = 70. The second staff begins at measure 6. The third staff begins at measure 11. The fourth staff begins at measure 17 and includes a first ending bracket labeled '1.'. The fifth staff begins at measure 25 and includes a second ending bracket labeled '2.' and a tempo change to 'Presto' with a new tempo marking of quarter note = 100. The sixth staff begins at measure 32. The seventh staff begins at measure 38. The eighth staff begins at measure 45. The ninth staff begins at measure 51. The tenth staff begins at measure 58. The eleventh staff begins at measure 64 and includes a second ending bracket labeled '2.'. The twelfth staff begins at measure 72. The thirteenth staff begins at measure 80. The score includes various musical notations such as eighth notes, sixteenth notes, triplets, and trills (tr).

a. Overture-bandurria 1ª

2

89

95

103

108

114

130

137

145

152

159

165

173

180

a. Ouverture



167J

BANDURRIA 2ª

TELEMANN

arr: Manuel Pérez-Gil

♩=70

6

12

17

25

2. Presto (♩=100)

32

39

46

53

60

70

77

a. Ouverture-bandurria 2ª

Musical score for 'a. Ouverture-bandurria 2ª'. The score is written in treble clef with a key signature of three sharps (F#, C#, G#). It consists of 18 measures across 12 staves. Measure numbers are indicated at the beginning of each staff: 85, 94, 101, 107, 113, 128, 134, 142, 150, 157, 163, 170, 176, and 182. The score includes various musical notations such as triplets (marked with '3'), a 9-measure rest (marked with '9'), trills (marked with 'tr'), and a tempo marking of quarter note = 70. The piece concludes with a double bar line at the end of the 18th measure.

a. Ouverture



167J

LAÚD

TELEMANN

arr: Manuel Pérez-Gil

♩ = 70

6

12

17

24

32

39

45

70

77

83

Presto (♩ = 100)

1. 2.

3

20

16

104

112

126

132

139

146

152

158

165

171

177

183

3

9

p *f*

$\text{♩} = 70$

GUITARRA

a. Overture

TWV 55 B1



167J

TELEMANN

arr: Manuel Pérez-Gil

♩ = 70

8

14

21

33

40

49

59

67

75

82

90

97

1. **2. Presto** (♩ = 100) 5

102

109

116

123

130

137

144

151

158

167

174

180

a. Ouverture

De la Suite en Sib Mayor



CONTRABAJO

TELEMANN

8 $\text{♩} = 70$ **12**

17

24 **Presto** ($\text{♩} = 100$)

1. **34** 2.

63 **4**

72

78 *

84 **2**

92

99



106



112



126



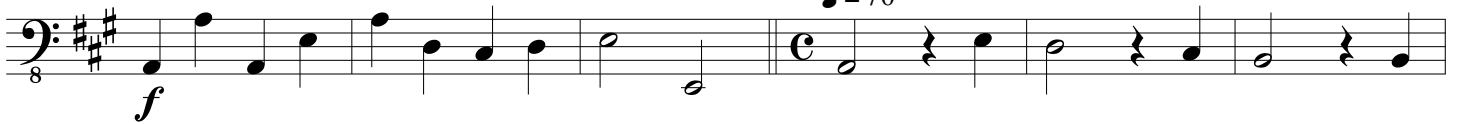
132



138



170



176



181

