

FLAUTA 1^a

7_MENUET



173J

$\text{♩} = 140$

TELEMANN

9

16

24

35

46

D.C. al Fine

FLAUTA 2^a

7_MENUET



173J

TELEMANN

$\text{♩} = 140$

9

16

24

34

44

D.C. al Fine

BANDURRIA 1ª

7_MENUET



173J

TELEMANN

$\text{♩} = 140$

9

15

23

32

43

D.C. al Fine

BANDURRIA 2^a

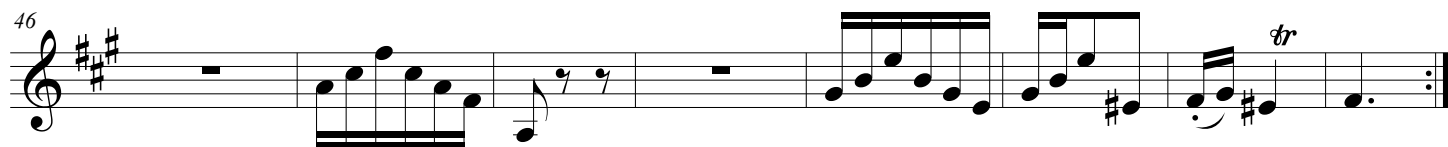
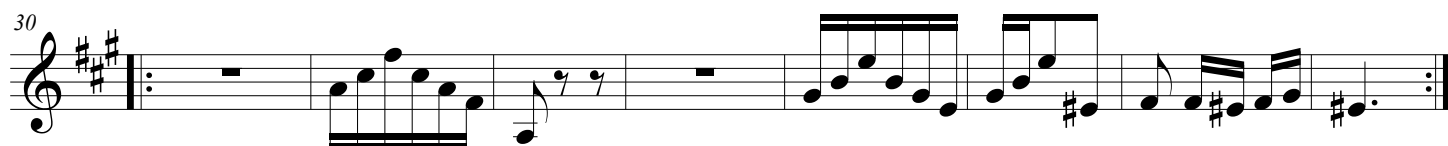
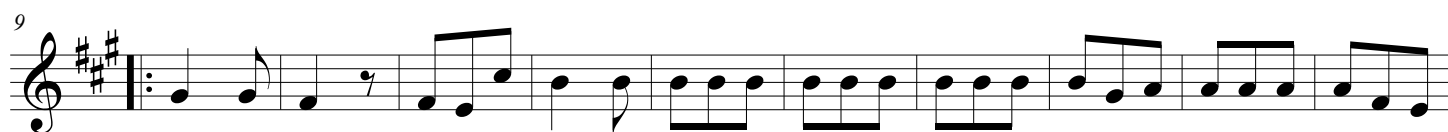
7_MENUET



173J

TELEMANN

$\text{♩} = 140$



D.C. al Fine

LAÚD

7_MENUET



173J

TELEMANN

$\text{♩} = 140$

9

20

1. 2.

30

6 14 D.C. al Fine

GUITARRA

7_MENUET



173J

TELEMANN

$\text{♩} = 140$

9

17

25

33

41

49

D.C. al Fine



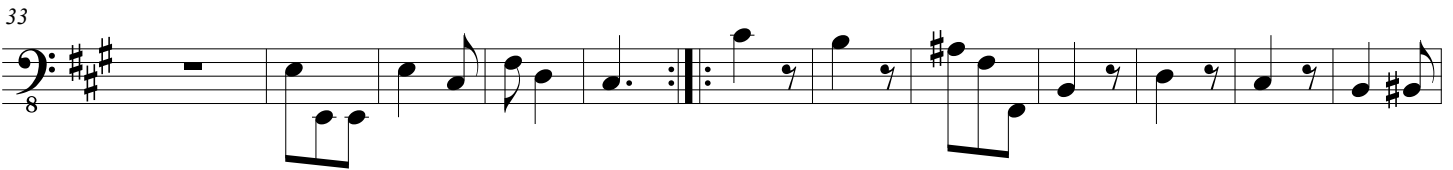
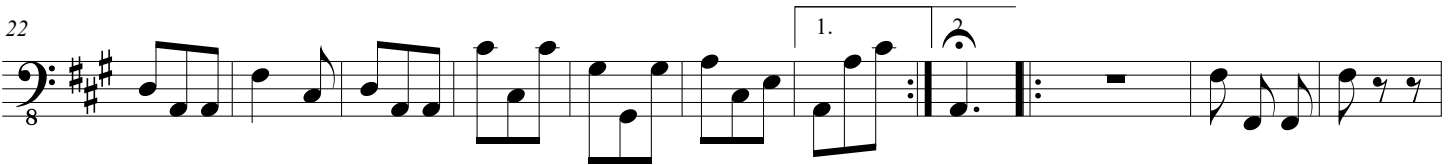
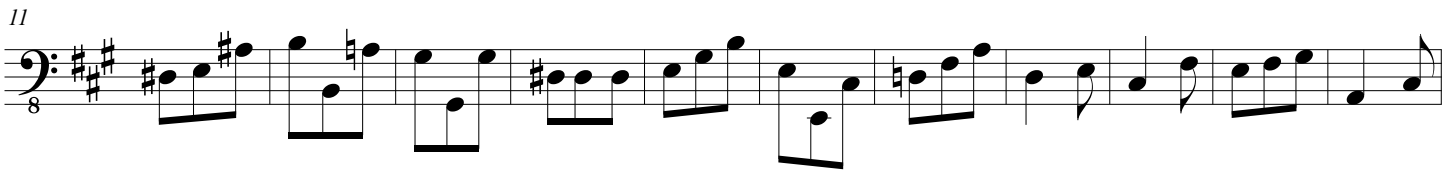
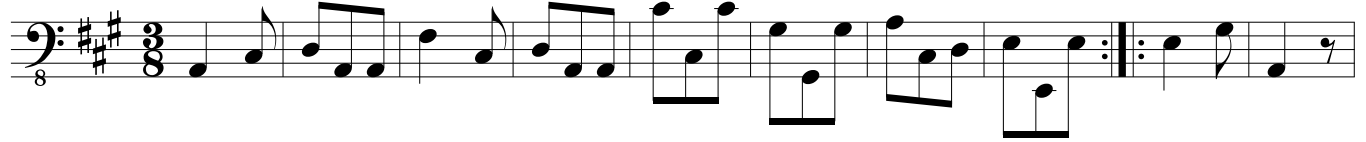
173J

7_MENUET

CONTRABAJO

TELEMANN

$\text{♩} = 140$



D.C. al Fine

