

FLAUTA 1

# CONCERT

TWV 53 II TIEMPO



175J-2

TELEMANN

Lento (♩=60)



D.S. al Fine

# CONCERT

TWV 53 II TIEMPO



175J-2

TELEMANN

Lento (♩ = 60)

2

6 *tr*

12 *tr*

18 *tr* Fine

23 4

30 3

37

40

44

48 *tr*

54 9

D.S. al Fine

# CONCERT

TWV 53 II TIEMPO



175J-2

BANDURRIA 1ª

TELEMANN

Lento (♩ = 60)

4

9

16

21 *Fine* 4

29

32 7

42

46 3

53

57

62

65

BANDURRIA 2ª

# CONCERT

TWV 53 II TIEMPO



175J-2

Lento (♩ = 60)



TELEMANN

5

9

13

18

24

36

50

56

61

Fine

8

10

7

LAÚD

# CONCERT

TWV 53 II TIEMPO



175J-2

Lento (♩ = 60)

TELEMANN

5

9

13

18

24

31

39

54

59

Fine

3

4

10

8

D.S. al Fine

# CONCERT

Guitarra

HEMMONN



175J-2

Lento ( $\text{♩} = 60$ )

6

11

17

23

32

37

49

54

60

66

Fine

4

D.S. al Fine

CONTRABAJO

# CONCERT

TWV 53 II TIEMPO



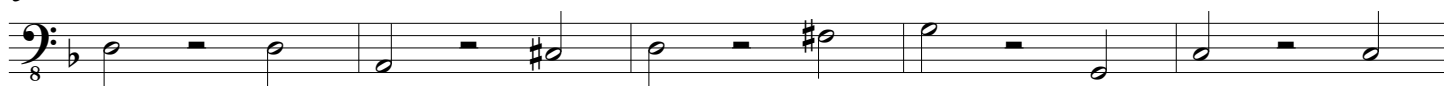
175J-2

TELEMANN

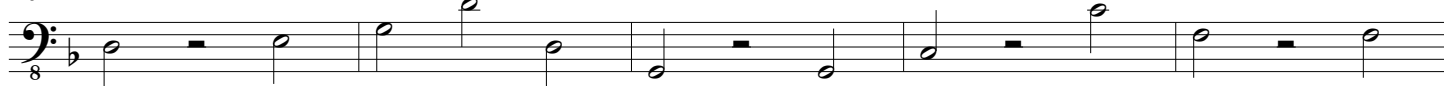
Lento (♩=60)



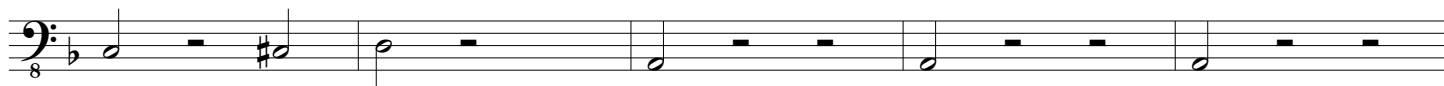
5



10



15



20



34



48



53



58



62



67

