

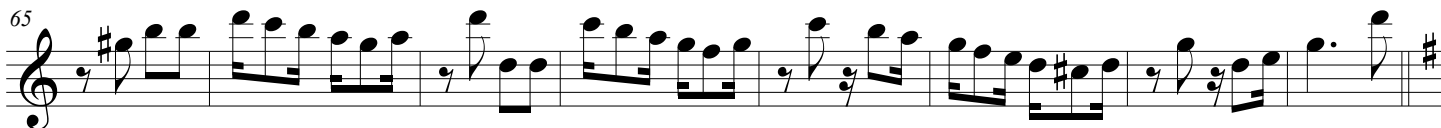
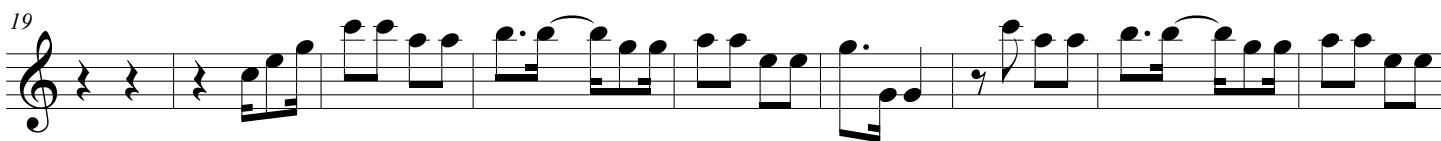
# Brejeiro

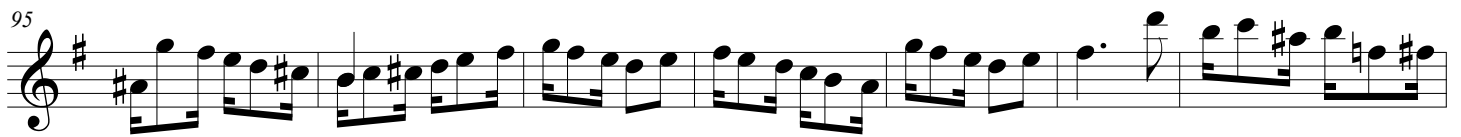
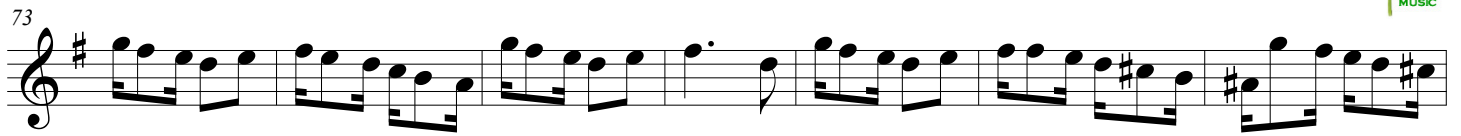


Flute  
Bandurria 1ª

Moderato (♩ = c. 108)

Ernesto Nazareth arr. Robert Hillier





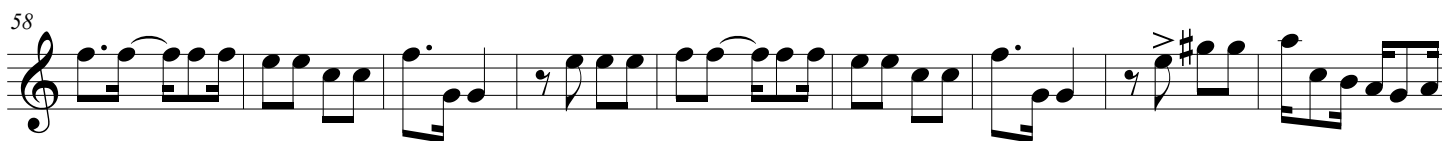
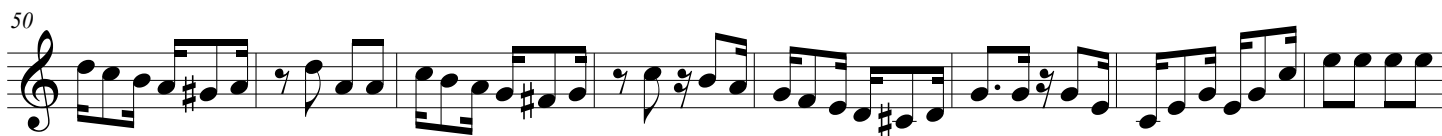
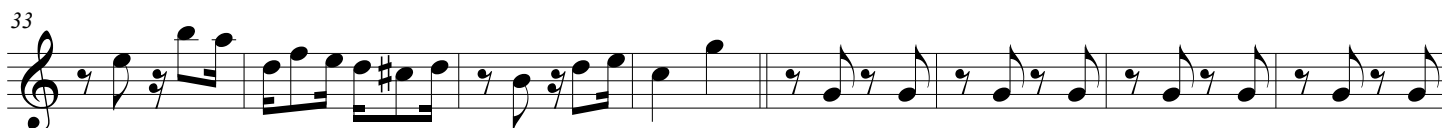
# Brejeiro



BANDURRIA 2ª

Moderato (♩ = c. 108)

Ernesto Nazareth arr. Robert Hillier





67



75



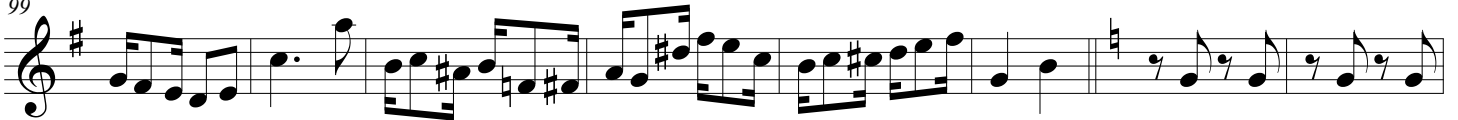
83



91



99



107



116



124



133



# Brejeiro



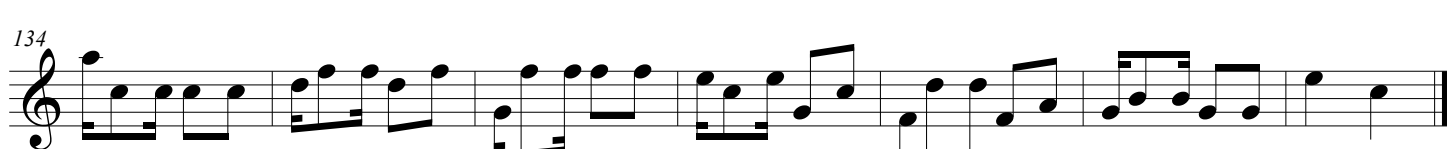
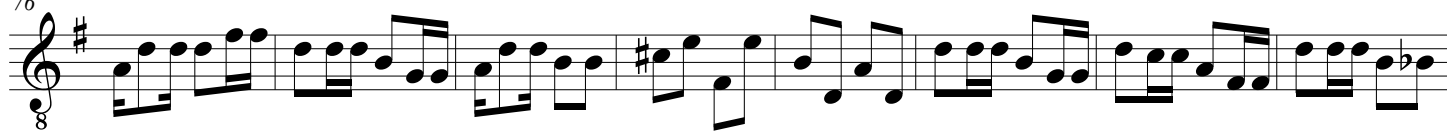
Moderato (♩ = c. 108)

Ernesto Nazareth arr. Robert Hillier

A musical score for the piece "Brejeiro" on the LAÚD 1 instrument. The score is written in treble clef with a 2/4 time signature and a key signature of one sharp (F#). The tempo is marked "Moderato" with a quarter note equal to approximately 108 beats per minute. The score consists of ten staves of music, with measure numbers 7, 14, 22, 30, 38, 45, 52, 60, and 68 indicated at the beginning of their respective staves. The music features a rhythmic pattern of eighth notes and quarter notes, with some melodic variations and key changes throughout the piece.

2  
76

# Brejeiro-laúd 1



LAÚD

# Brejeiro



Moderato (♩ = c. 108)

Ernesto Nazareth arr. Robert Hillier

A musical score for the piece "Brejeiro" on LAÚD. The score is written in treble clef with a 2/4 time signature. It consists of eight staves of music, each starting with a measure number (9, 18, 26, 34, 43, 53, 61) and a small '8' below the staff. The music features a variety of rhythmic patterns, including eighth and sixteenth notes, and rests. There are some dynamic markings like accents (&gt;) and slurs. The key signature has one sharp (F#).





GUITARRA

# Brejeiro



Moderato (♩ = c. 108)

Ernesto Nazareth arr. Robert Hillier

A musical score for guitar, consisting of ten staves of music. The score is written in treble clef with a 2/4 time signature. The tempo is marked "Moderato" with a quarter note equal to approximately 108 beats per minute. The key signature is one sharp (F#). The score is arranged by Robert Hillier, based on the original by Ernesto Nazareth. The music features a rhythmic pattern of eighth and sixteenth notes, with some melodic lines. The staves are numbered 7, 14, 21, 29, 37, 44, 51, 58, and 66. The final staff ends with a double bar line and a sharp sign.

2

## Brejeiro-guitarra

73



82



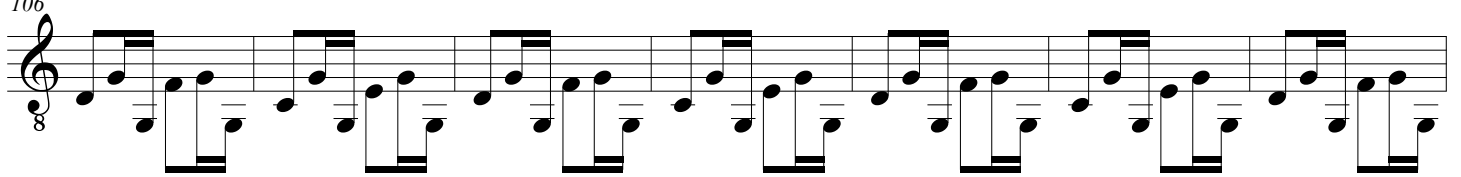
90



98



106



113



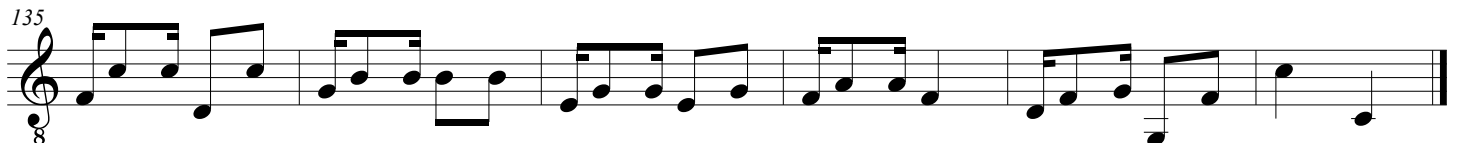
120



127



135



CONTRABAJO

# Brejeiro



Moderato (♩ = c. 108)

Ernesto Nazareth arr. Robert Hillier

8

13

25

32

43

55

67

79

90

102

116

129