

VIOLIN/FLUTE

OBLIVION



248J

ASTOR PIAZZOLA
adapt.: Manuel Pérez-Gil

♩ = 90

mf

7

13 *V*

20

26 *ff*

31 *ff*

37 *f*

44 *f*

50 *f*

3

OBLIVION-solista

248J



2
56

62

69

75

82

88

95

102

rit.

OBLIVION



ASTOR PIAZZOLA
adapt.: Manuel Pérez-Gil

$\text{♩} = 90$

mf

6

13

19

25

31

38

45



52

58

64

70

81

89

95

101

105

rit.

OBLIVION



ASTOR PIAZZOLA
adapt.: Manuel Pérez-Gil

$\text{♩} = 90$
mp

7

12

20

28

34

41

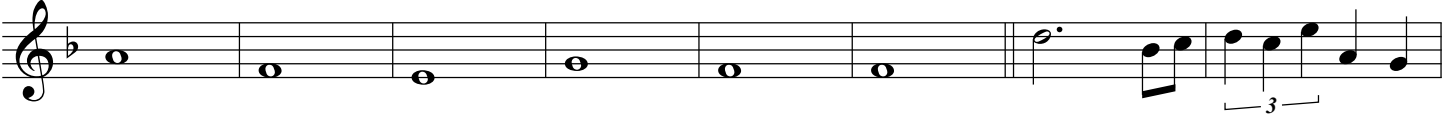
48



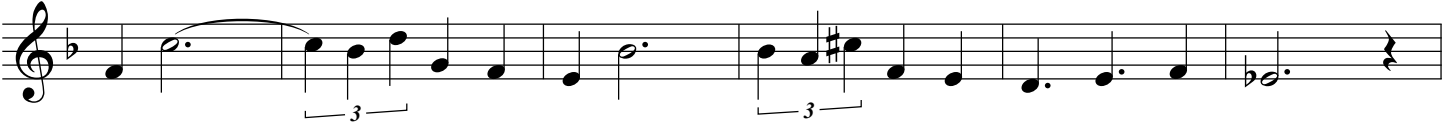
53



61



69



75



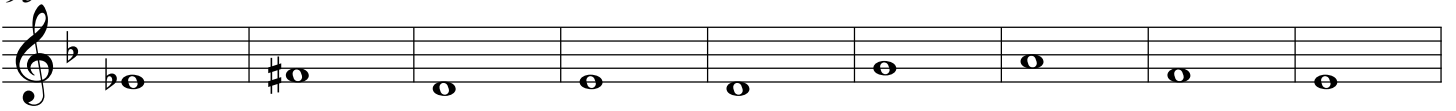
83



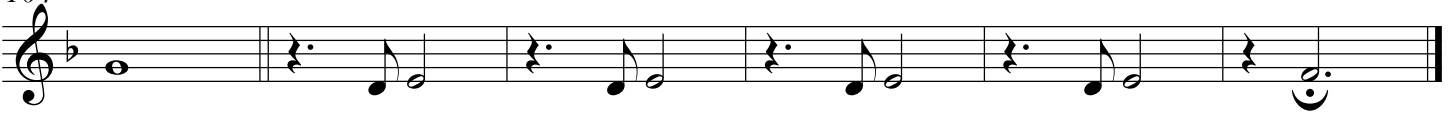
89



95



104



rit.

LAÚD

OBLIVION



248J

ASTOR PIAZZOLA
adapt.: Manuel Pérez-Gil

$\text{♩} = 90$
mp

7

14

22

30

36

43

50



57

66

72

78

85

92

100

105

rit.

GUITARRA

OBLIVION



248J

ASTOR PIAZZOLA
adapt.: Manuel Pérez-Gil

♩ = 90

mp

C III

C I

6

11

17

23

29

35

40

46

51

C III

C I

C III

C I

3

3

3

3

OBLIVION-guitarra

2
57



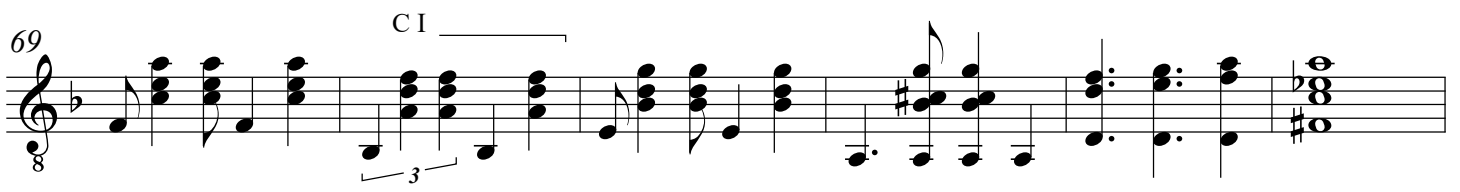
63

C III

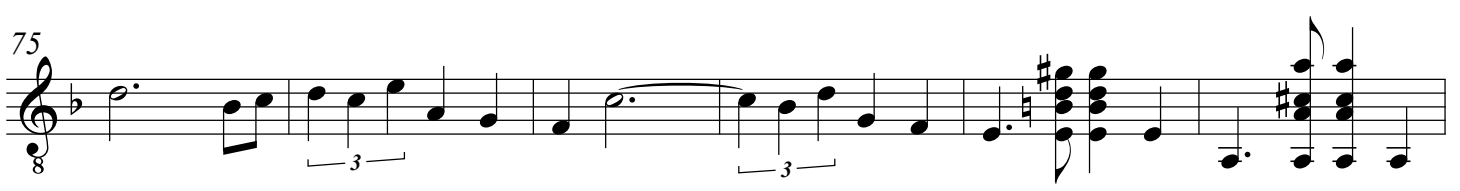


69

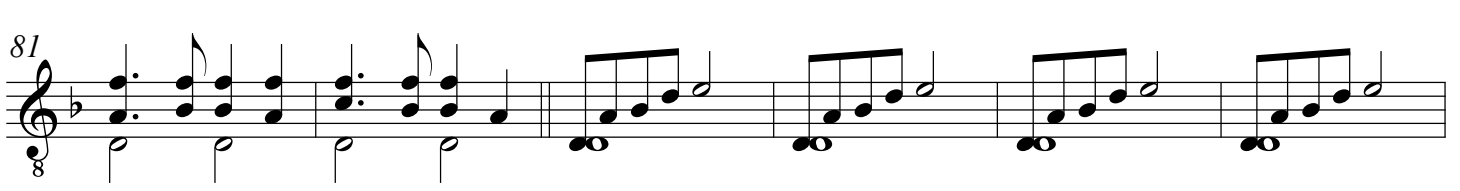
C I



75

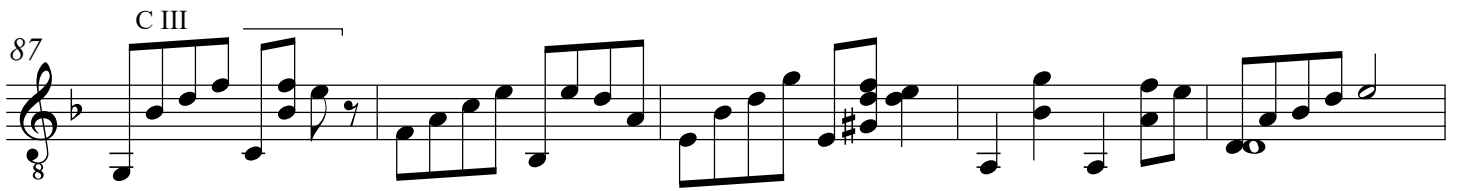


81



87

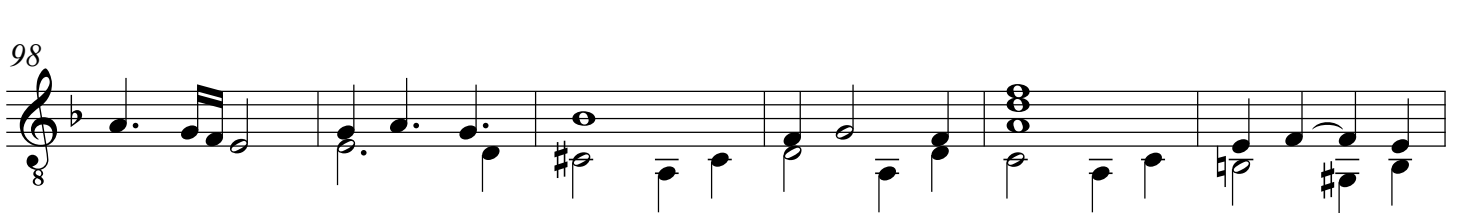
C III



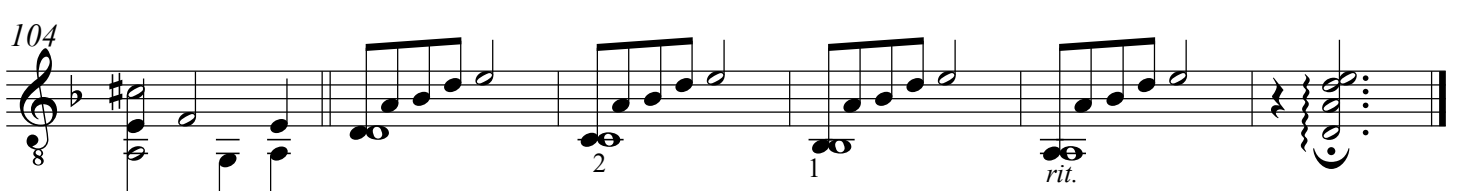
92



98



104



OBLIVION



248J

CONTRABAJO

ASTOR PIAZZOLA
adapt.: Manuel Pérez-Gil

♩ = 90

mf

7

13

18

23

29

34

39

45

51



2
58

OBLIVION-contrabajo

65

71

77

83

90

95

100

105

rit.