

MINUETO -SINFONIA JUPITER

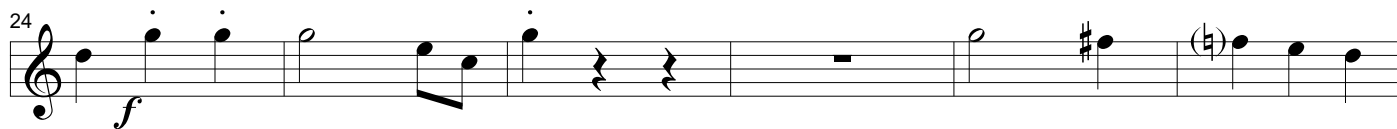
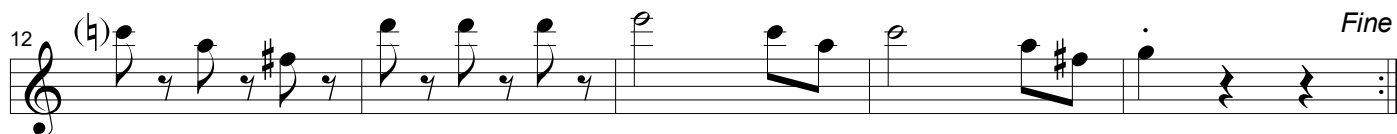
W.A. Mozart



BANDURRIA 1ª

arr.: Manuel Pérez Gil 1998

Presto (♩ = 160)



MINUETO JUPITER-Bandurria 1ª



36 *p* # (b)

43 *p* # (b) 2 *p* # (b)

50 *p* # (b)

56 *p* # (b)

62 *p* # (b)

68 *p* #

76 *p* #

83 *p* # *D.C. al Fine*

MINUETO - SINFONIA JUPITER

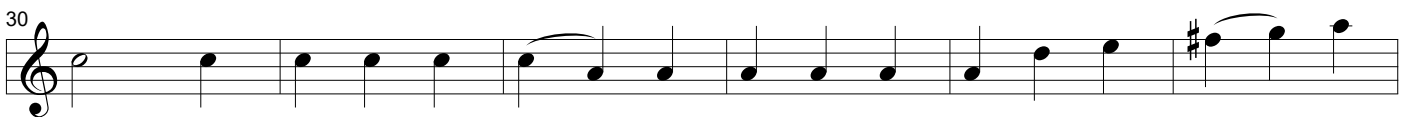
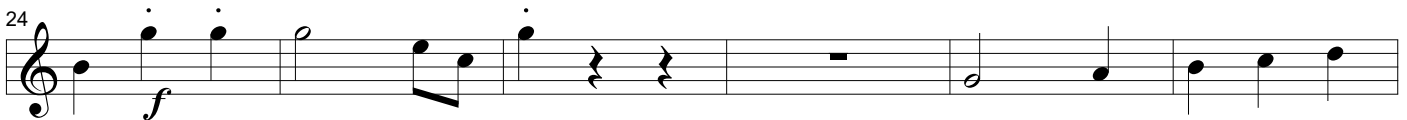
W.A. Mozart



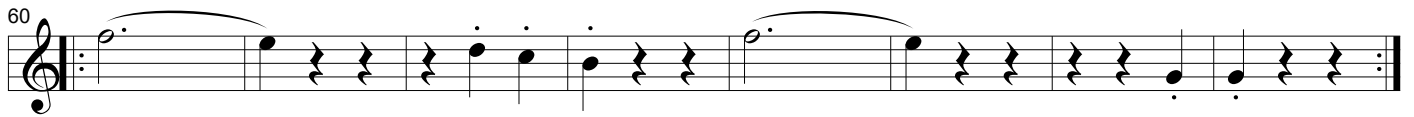
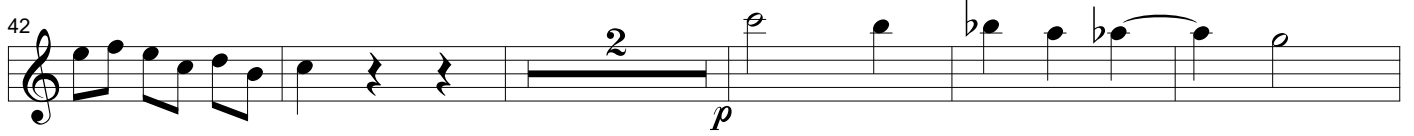
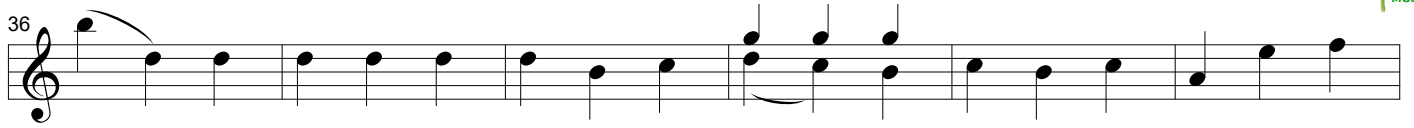
BANDURRIA 2ª

Presto (♩ = 160)

arr.: Manuel Pérez Gil 1998



MINUETO JUPITER-Bandurria 2ª



D.C. al Fine

MINUETO -SINFONIA JUPITER

W.A. Mozart



LAÚD

Presto (♩ = 160)

arr.: Manuel Pérez Gil 1998

1

8

14

Fine

20

26

32

MINUETO JUPITER



38

44

53

59

65

71

77

83

D.C. al Fine

MINUETO - SINFONIA JUPITER

W.A. Mozart



GUITARRA

Presto (♩ = 160)

arr.: Manuel Pérez Gil 1998

1

2

p

Detailed description: This block contains the first six measures of the piece. It begins with a treble clef, a 3/4 time signature, and a key signature of one sharp (F#). Measure 1 is a whole rest. Measures 2-6 contain a sequence of chords and eighth notes. A dynamic marking of *p* (piano) is placed below measure 4. A first ending bracket labeled '1' spans measures 5 and 6, leading to a second ending bracket labeled '2' which also spans measures 5 and 6.

7

Detailed description: This block contains measures 7 through 11. It continues the rhythmic pattern of eighth notes and chords. A slur is placed under measures 7 and 8. The piece concludes with a key signature change to one flat (F) in measure 11.

12

Fine

Detailed description: This block contains measures 12 through 16. It features a series of chords and eighth notes. A key signature change to one sharp (F#) occurs in measure 15. The piece ends with a double bar line and repeat dots, followed by the word *Fine*.

17

Detailed description: This block contains measures 17 through 24. It begins with a repeat sign. The notation consists of chords and eighth notes. There are several rests in this section.

25

f

Detailed description: This block contains measures 25 through 30. It starts with a dynamic marking of *f* (forte). The notation includes chords and eighth notes, with several rests.

31

Detailed description: This block contains measures 31 through 36. It begins with a key signature change to one flat (F). The notation consists of chords and eighth notes, ending with a double bar line.

MINUETO JUPITER



37

43

49

55

60

68

73

79

D.C. al Fine