

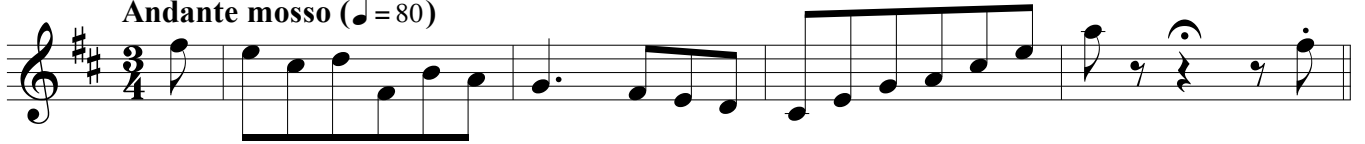
ZINA



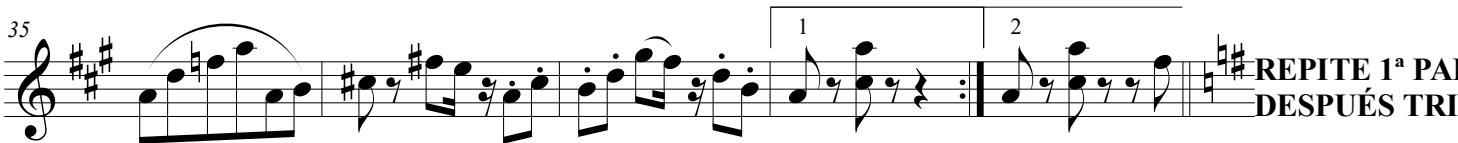
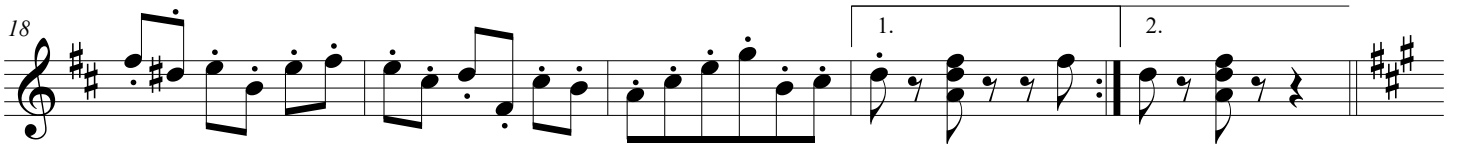
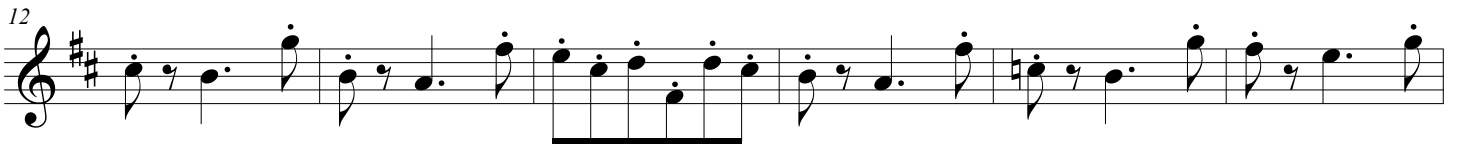
BANDURRIA 1ª

LUIGI BRACCO (1911)

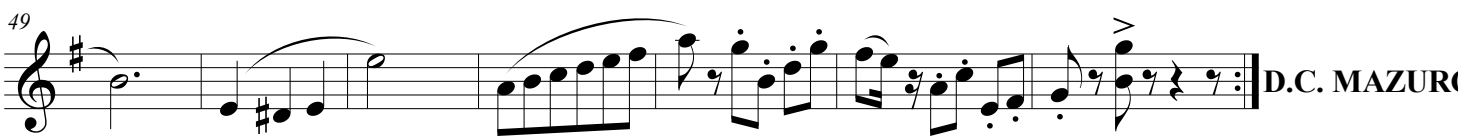
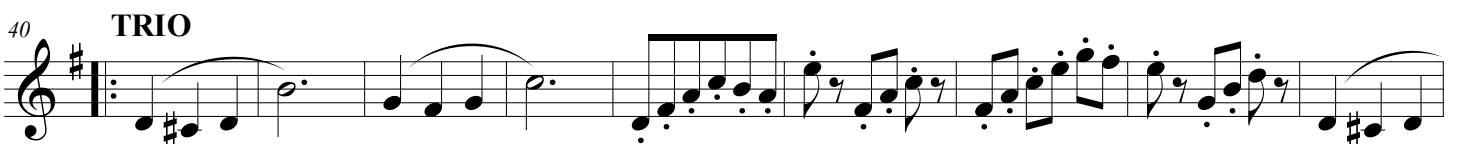
Andante mosso (♩ = 80)



Mazurca (♩ = 120)



REPITE 1ª PARTE
DESPUÉS TRIO



ZINA



BANDURRIA 2^a

Andante mosso (♩ = 80)

LUIGI BRACCO (1911)



6 Mazurca (♩ = 120)



ZINA



GUITARRA

Andante mosso (♩ = 80)

LUIGI BRACCO (1911)

Musical notation for the first system, measures 1-5. The key signature is two sharps (F# and C#) and the time signature is 3/4. The music begins with a whole rest, followed by a series of chords and a melodic line.

6 Mazurca (♩ = 120)

Musical notation for the second system, measures 6-12. The tempo is marked as Mazurca with a quarter note equal to 120. The music features a rhythmic pattern of eighth notes and chords.

13

Musical notation for the third system, measures 13-18. The music continues with the Mazurca rhythm.

19

Musical notation for the fourth system, measures 19-24. It includes first and second endings for a section.

25

Musical notation for the fifth system, measures 25-30. The music continues with the Mazurca rhythm.

31

Musical notation for the sixth system, measures 31-36. The music continues with the Mazurca rhythm.

37

Musical notation for the seventh system, measures 37-39. It includes first and second endings for a section.

REPITE 1ª PARTE
DESPUÉS TRIO

40 TRIO

Musical notation for the eighth system, measures 40-46. The section is marked as TRIO and features a different rhythmic pattern.

47

Musical notation for the ninth system, measures 47-51. The music continues with the Trio rhythm.

52

Musical notation for the tenth system, measures 52-56. The section is marked as D.C. MAZURCA and returns to the Mazurca rhythm.

D.C. MAZURCA